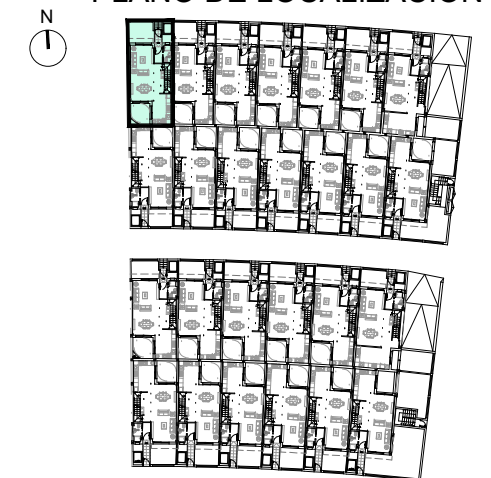




PLANO DE LOCALIZACION



Bloque III - Vivienda N° 1

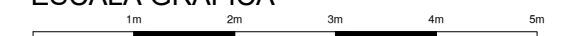
Superficies útiles y construidas B/R

Total superficie útil 57,45 m²
Total superficie construida p.p. ZZ.CC. 84,55 m²

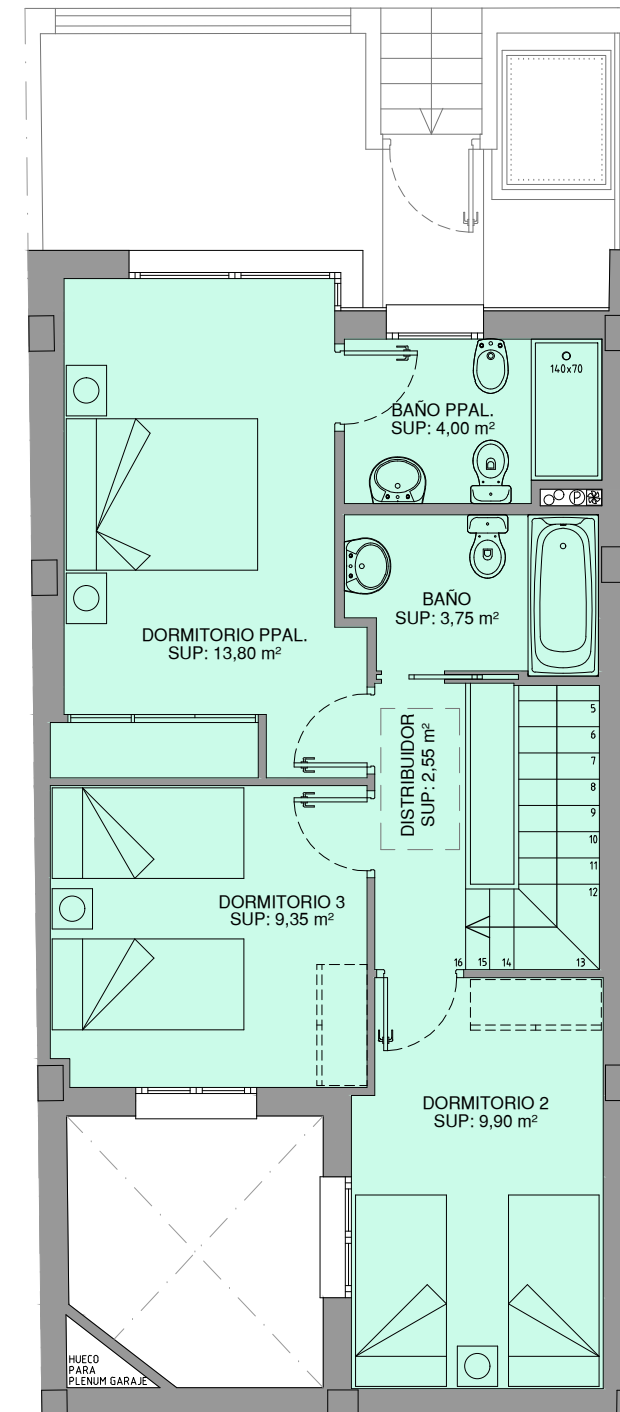
Superficies útiles y construidas S/R

Total superficie útil 89,65 m²
Total superficie construida 108,32 m²

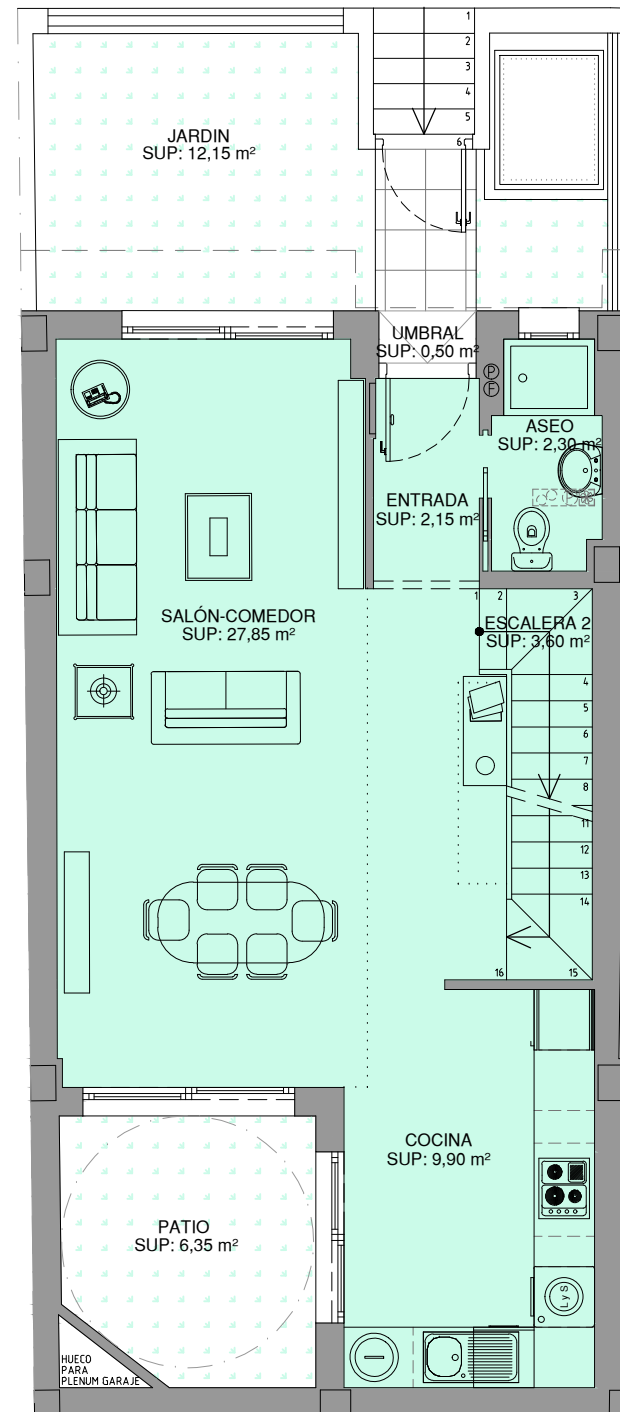
ESCALA GRAFICA



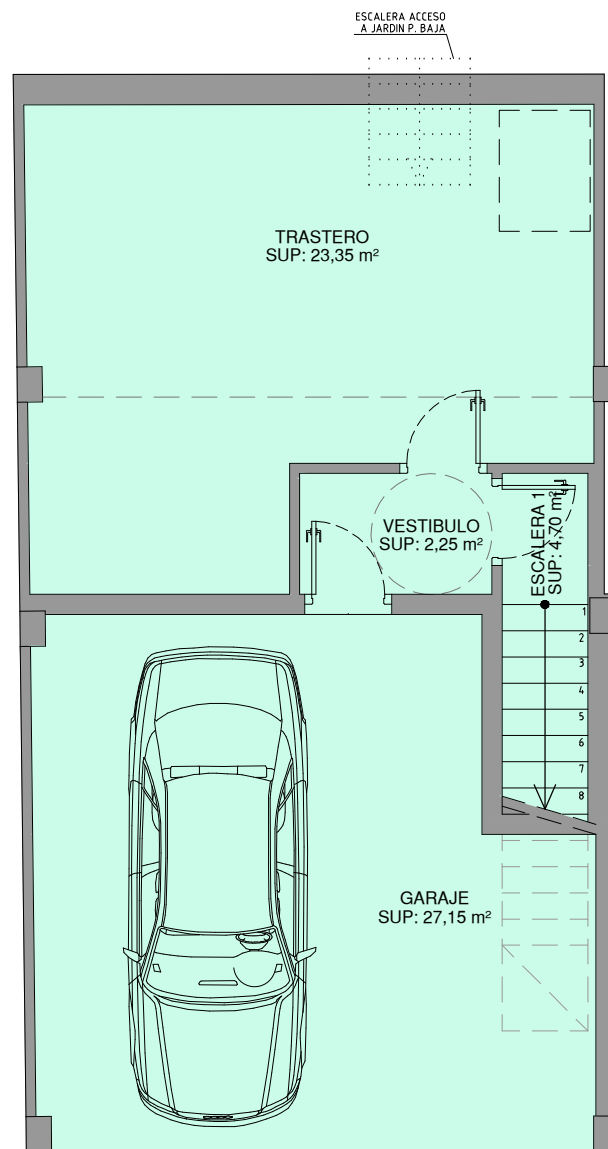
GABRIEL ROJAS
GRUPO



PLANTA ALTA



PLANTA BAJA



PLANTA SOTANO