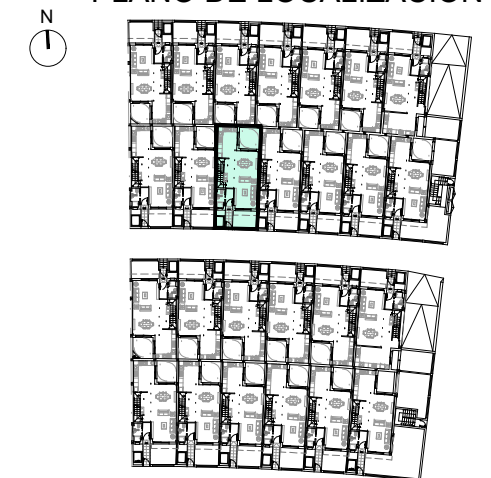




PLANO DE LOCALIZACION



Bloque III - Vivienda N° 10

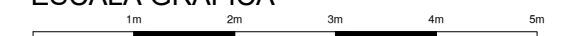
Superficies útiles y construidas B/R

Total superficie útil 55,70 m²
Total superficie construida p.p. ZZ.CC. 81,97 m²

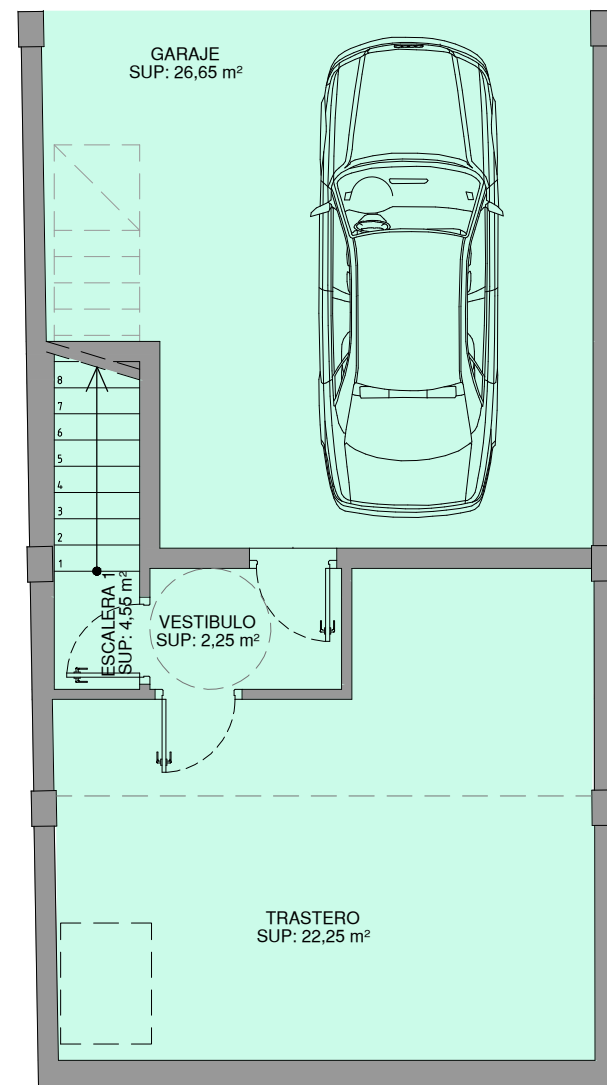
Superficies útiles y construidas S/R

Total superficie útil 91,35 m²
Total superficie construida 110,37 m²

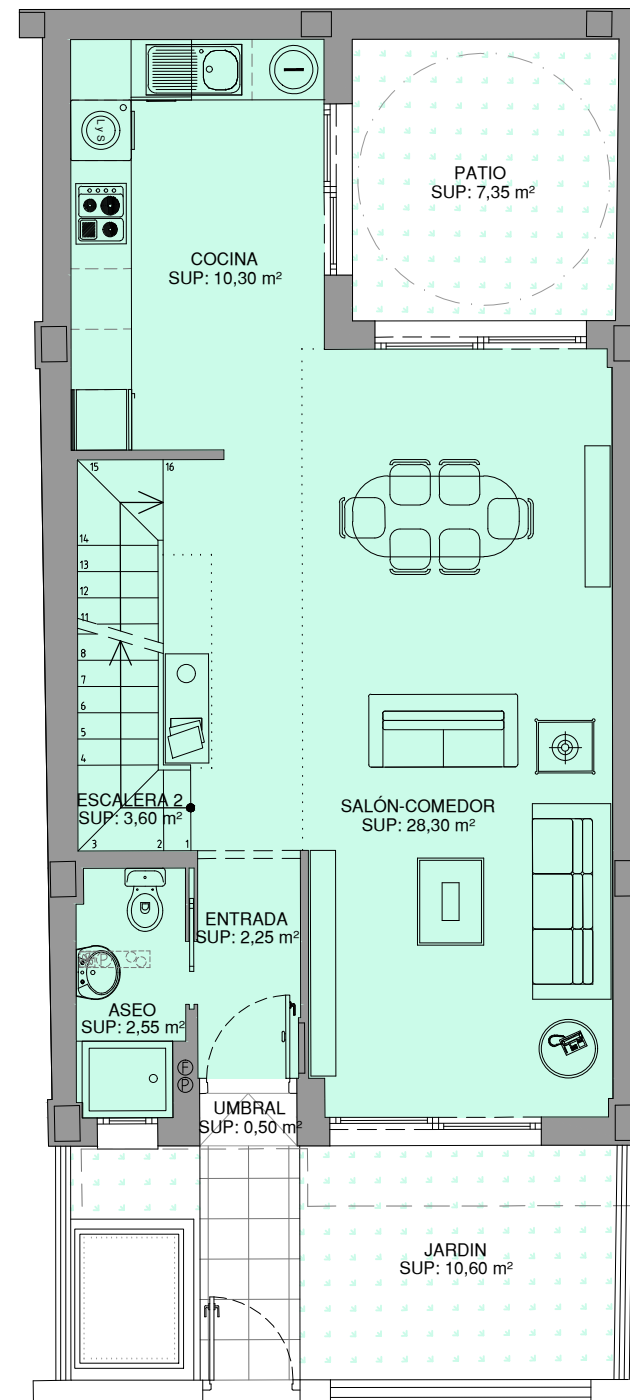
ESCALA GRAFICA



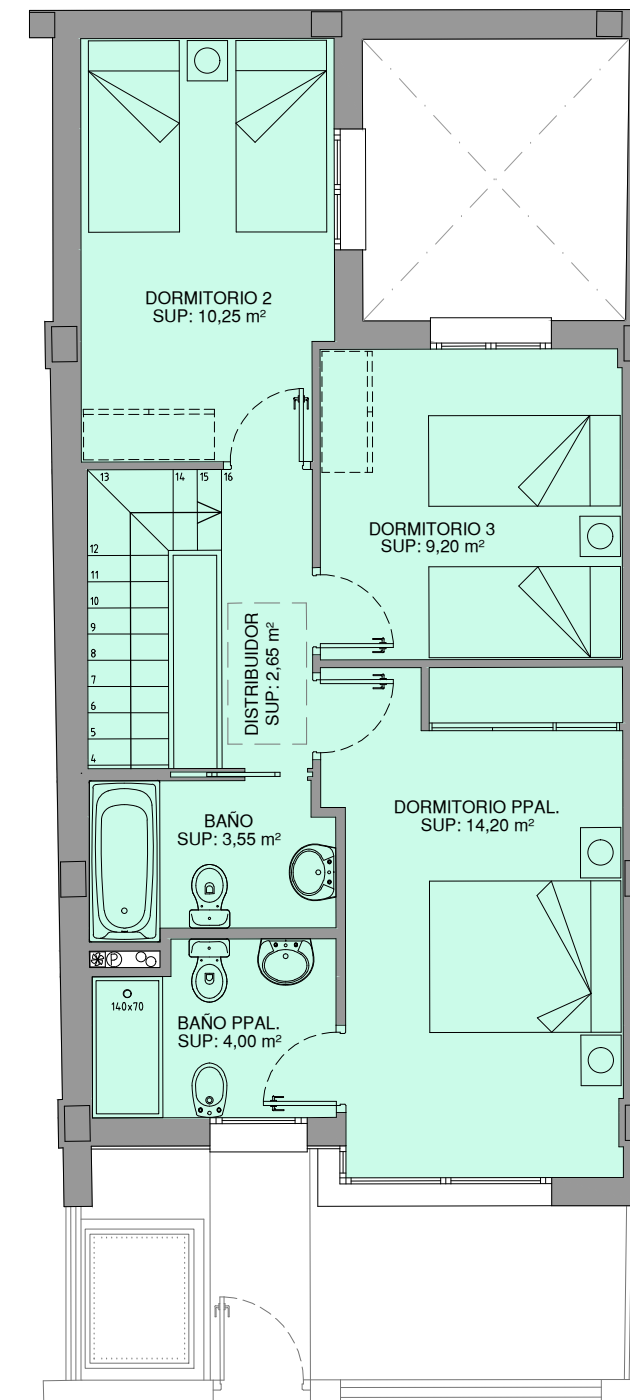
GABRIEL ROJAS
GRUPO



PLANTA SOTANO



PLANTA BAJA



PLANTA ALTA